

METAL DETECTORS

AQ1B



APPLICATIONS

POLICE / ARMED FORCES - Provides a positive search and location tool for recovery of all types of metallic weapons & arms etc. Effective in a wide range of situations, particularly low visibility or where items have become camouflaged or buried.

SALVAGE - Recovery of a wide range of items including lost anchors, chains, tools outboards etc., plus the recovery of cargo and valuables from scattered and buried wrecks.

SURVEY - Wide range of commercial underwater survey tasks including location and tracking of cables, pipelines and general metallic debris.

ARCHAEOLOGY - Meets the need for a general purpose marine survey tool, specifically for locating and mapping sites of archaeological interest in terms of the distribution of metallic objects.

INTRODUCTION

AQUAPULSE metal detectors have featured in every conceivable underwater application around the world in the past decade with an exceptional degree of success.

The AQUAPULSE 1B (30cm) is an underwater metal detector employing a large diameter search head mounted on the end of a telescopic arm. The 1B can detect objects up to a range of 3m (10ft)

WHICH MAKES IT THE MOST POWERFUL UNIT ON THE MARKET

Apart from the sensitivity threshold control, the 1B detector has an additional control to enable the whole range of AQUAPULSE coils to be used with it. The same control can be used to reject surface clutter such as ring pulls, cigarette foil etc., often found buried in the sand or mud. The internal "Ni-cad" battery pack allows in the order of 10 hours operation.

FEATURES

- ◆ GOOD PINPOINTING ABILITY
- ◆ 100m DEPTH CAPABILITY
- ◆ RECHARGEABLE BATTERIES
- ◆ 8 - 10 HOURS OPERATION
- ◆ NO LOSS OF RANGE IN SEA
- ◆ QUICK RELEASE HARNESS
- ◆ FERRITE PROBE OPTION
- ◆ RUGGED CONNECTORS



THE AQUAPULSE 1B 30cm KIT

SYSTEM DESCRIPTION

The control electronics are housed in the proven Aquapulse underwater housing, all connections to it are made via robust "IKELITE" connectors.

The entire range of Aquapulse coils from 20cm (8in) to 38cm (15in) together with the probes can be used with the Aquapulse 1B making it an extremely versatile system and therefore an attractive proposition to both amateur and professional divers.



SPECIFICATION - RANGE

<i>1/8 oz gold.....</i>	<i>33cm (13")</i>
<i>Lincoln head penny.....</i>	<i>38cm (15")</i>
<i>Spanish 'Piece of Eight'.....</i>	<i>56cm (22")</i>
<i>Iron Strong Box.....</i>	<i>183cm (6ft)</i>
<i>Larger objects up to.....</i>	<i>300cm (10ft)</i>

AQUAPULSE 1B / 38cm - CONSISTS:-

- ◆ Aquapulse 1B Electronic Control Unit
- ◆ Quick Release Harness
- ◆ 38cm (15") hand held search head complete with telescopic shaft
- ◆ Bone Conductor Earphone
- ◆ Battery Charger (110v/220v AC)
- ◆ Operating Instructions



AQUAPULSE 1B / 20cm

Compared to the 38cm system the 20cm version has a smaller search coil mounted on a short handled stem, otherwise the kit is identical.

This option is particularly suited to working in confined places and where intermittent diver use is anticipated. The folding head and short stem allow easy stowage on the diver giving hands free diving between usage.

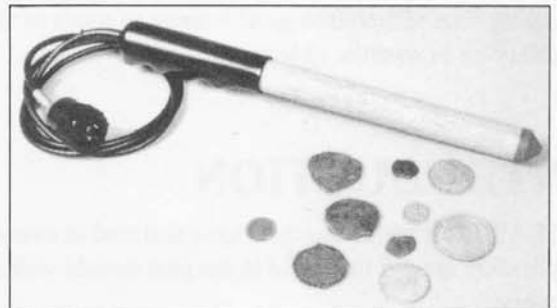
The compromise with the 20cm option is that some penetration and bottom coverage is sacrificed for ease of carrying and slightly more pinpointing ability.

The 20cm option also gives a more economical package due to lower complexity of stem assembly.



ACCESSORIES

A range of options and accessories are available including a FERRITE PROBE, this being by far the most popular extra. This miniaturised sensing head gives the operator the ability to probe deep into soft beds, narrow crevices and under ledges and rocks, it also has the ability to pinpoint items with cm accuracy - this is important where items such as coins have to be broken out of coral and general concretion with tools that can easily cause damage.



DISTRIBUTED BY: